



Eliscorno 8^o

2^o 2

El Barberillo de Lavapies

Potpourri.

Mtro Barbieri



Allegretto || $\text{F} \sharp \sharp \frac{6}{8}$

mf *cres*

mf

mf *sol*

mf

mf *sol*

mf

mf

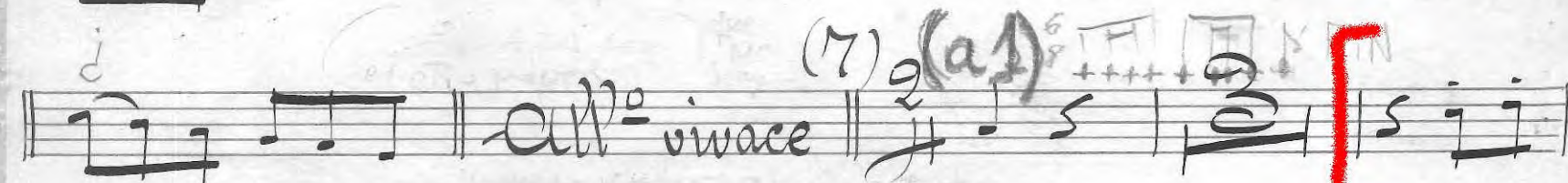
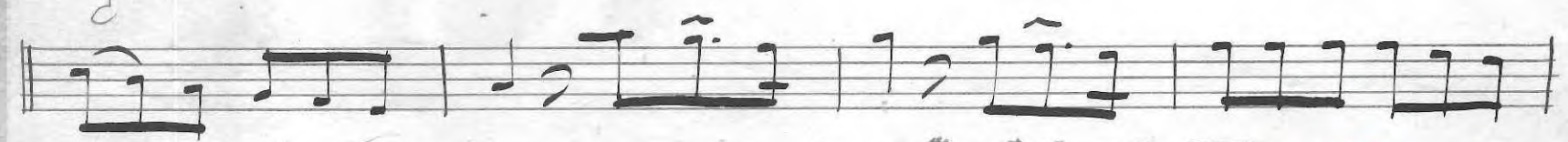
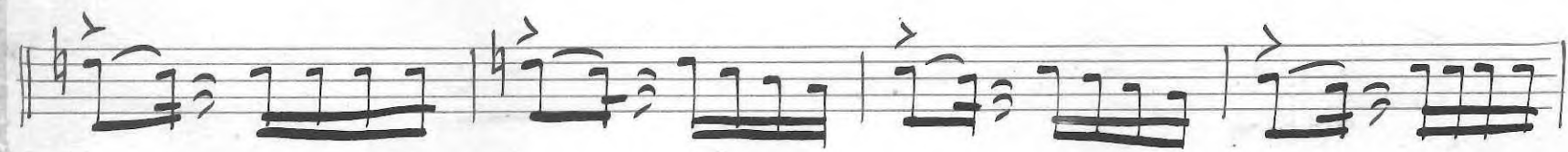
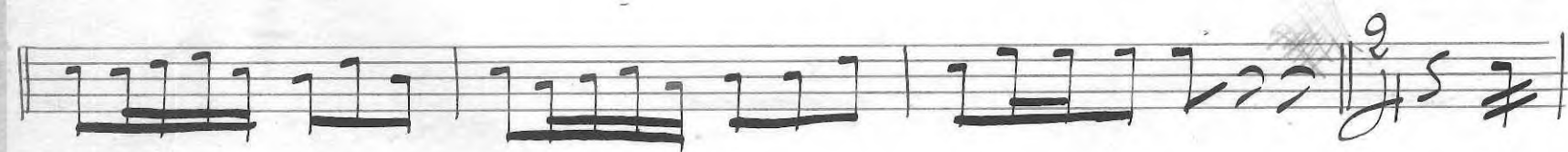
mf

mf

BANDA MUNICIPAL

- DE -

MADRID



Handwritten musical score on ten staves. The notation includes various musical symbols such as notes, rests, accidentals, and dynamic markings.

Key markings and annotations include:

- (9) *ff*
- (10)
- ff*
- modto*
- 8* (written above notes)
- vivota* (written below notes)
- (11)
- all^o*
- (12)
- mf*
- tace* (circled)
- TOCAR* (circled)
- Aire de Bolero. Modestoso*
- (13)

A large red bracket is drawn on the right side of the staves, spanning from the sixth staff down to the eighth staff.

asomif

Handwritten musical score, measures 11 to 16. The score is written on six staves. Measure 11 starts with a treble clef, a key signature of one sharp (F#), and a 3/4 time signature. The tempo/mood is marked *Solo* and the dynamics *mf*. Measure 14 is marked with a repeat sign and the number (14). Measure 15 is marked with a repeat sign and the number (15). Measure 16 is marked with a repeat sign and the number (16). The score includes various musical notations such as eighth notes, sixteenth notes, and rests.

Handwritten musical score, measures 17 to 18. The score is written on four staves. Measure 17 starts with a treble clef, a key signature of one sharp (F#), and a 3/4 time signature. The tempo/mood is marked *Solo muy expresivo*. The dynamics are marked *f* and *p*. The score includes various musical notations such as eighth notes, sixteenth notes, and rests. Measure 18 is marked with a repeat sign and the number (18). The score ends with a large, stylized signature.

Solo muy expresivo

(Con sonido lleno pero no estridente)

ad libitum